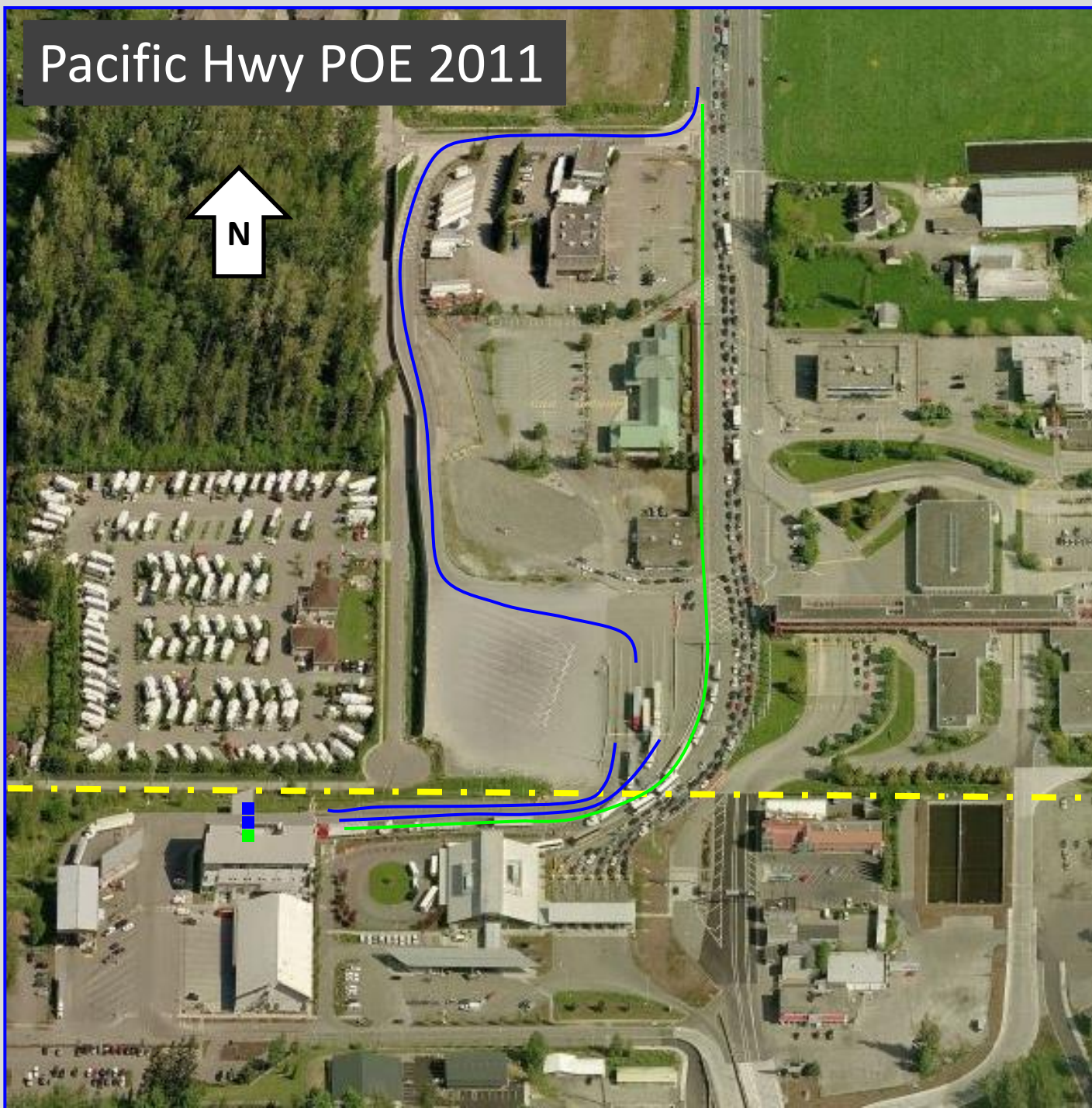


Pacific Hwy POE 2011



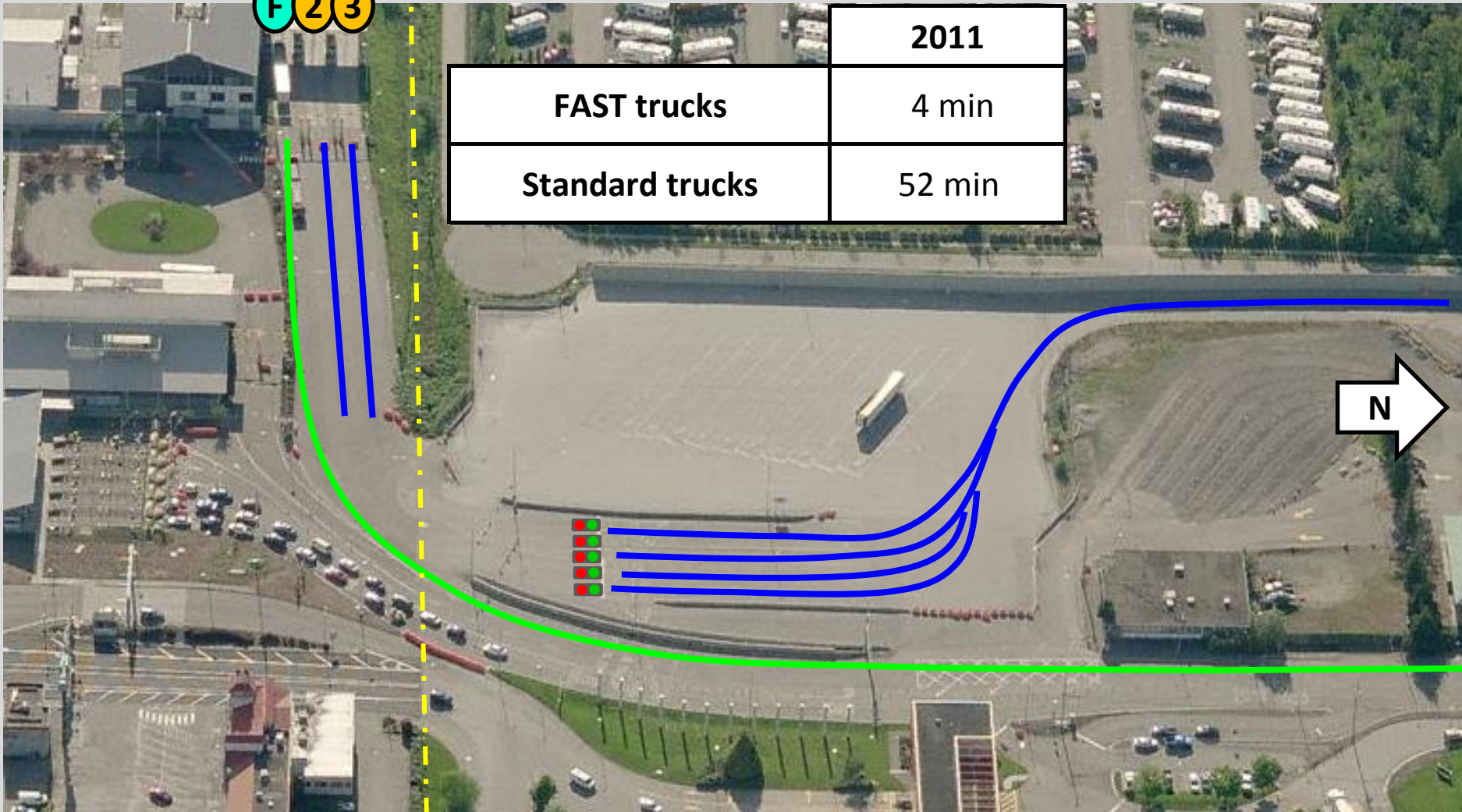
Pacific Hwy POE 2011



Pacific Hwy POE 2011

F 2 3

2011	
FAST trucks	4 min
Standard trucks	52 min



Pacific Hwy POE 2011 Pilot

1 2 3

	2011	2011 Pilot
FAST trucks	4 min	12 min
Standard trucks	52 min	



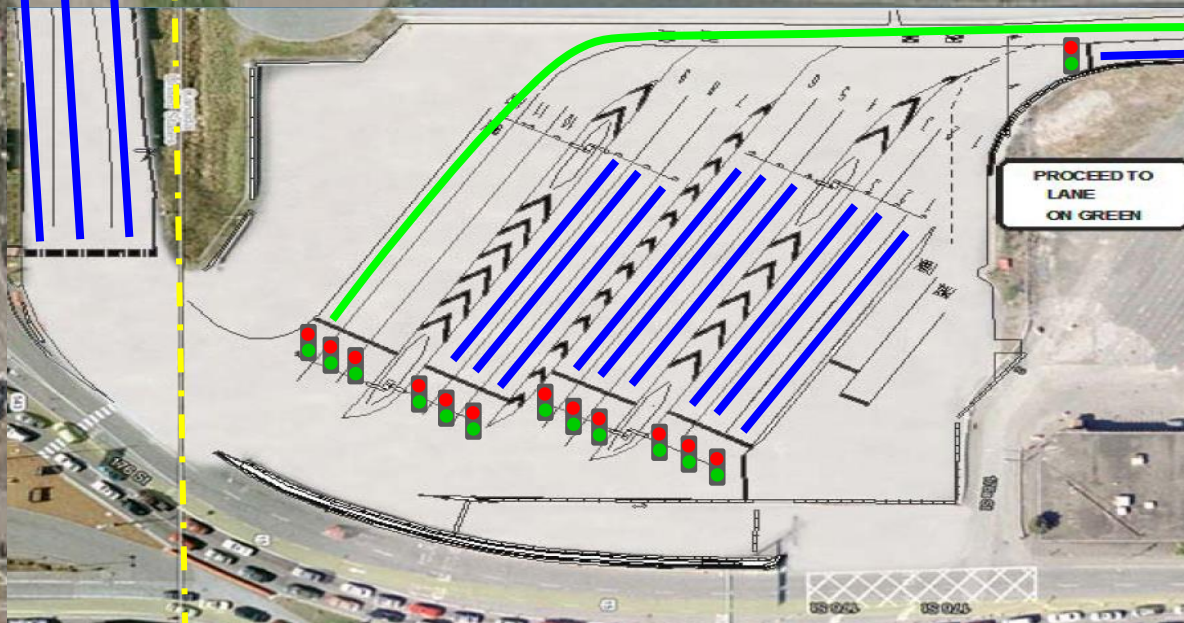


PROCEED TO
LANE
ON GREEN

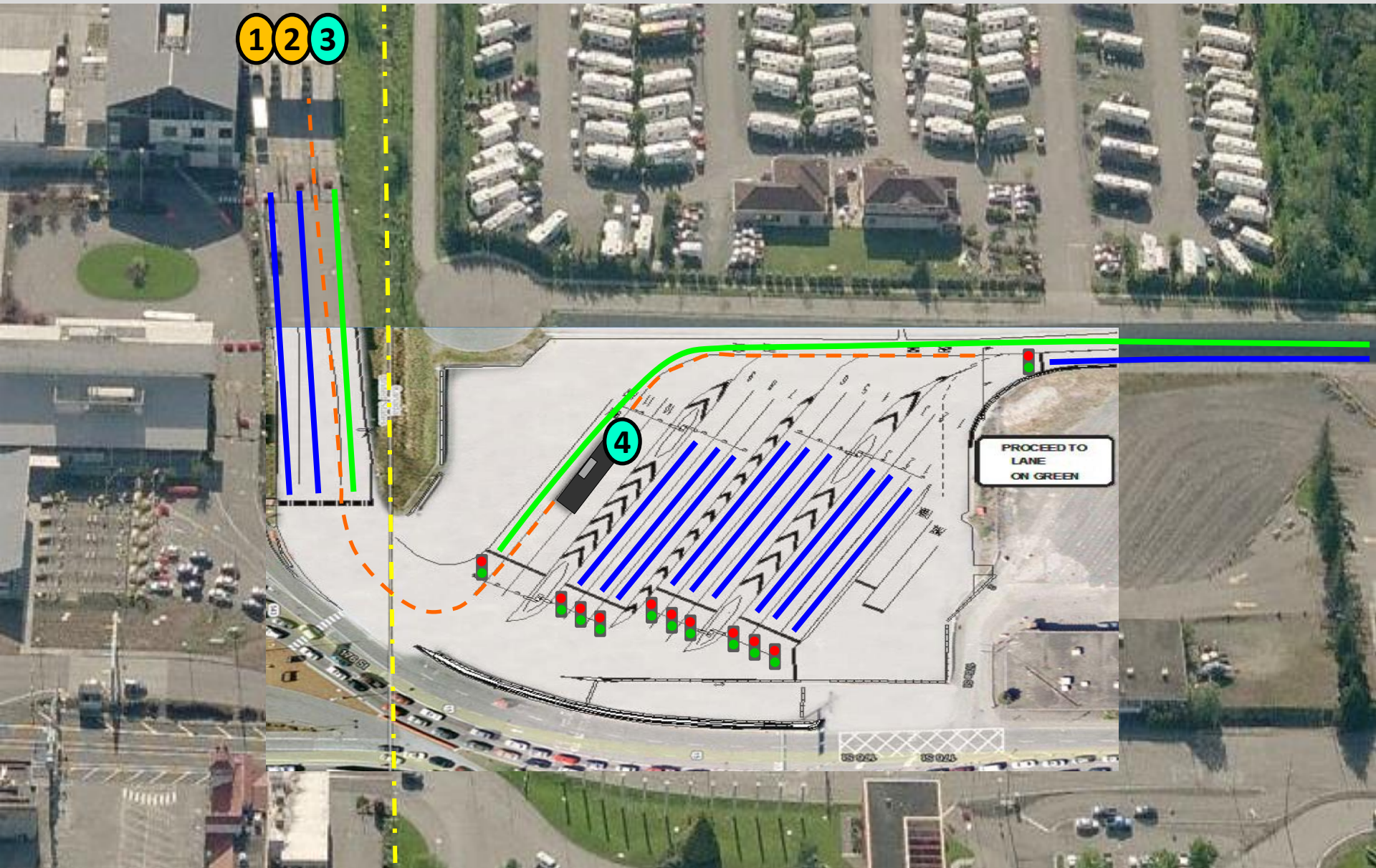
Pacific Hwy POE 2012

123

	2011	2011 Pilot	2012
FAST trucks	4 min	12 min	9 min
Standard trucks	52 min		16 min



Pacific Hwy POE 2013 Cargo Pre Inspection Pilot



HWY 15 TRUCK BORDER CROSSING
DESIGNATED PRECLEARANCE AREA



LEGEND



AREA OF THE BORDER CROSSING USED
EXCLUSIVELY FOR THE PRECLEARANCE
OF COMMERCIAL TRUCK TRAFFIC



BRITISH
COLUMBIA
The Best Place on Earth

MINISTRY OF TRANSPORTATION
AND INFRASTRUCTURE



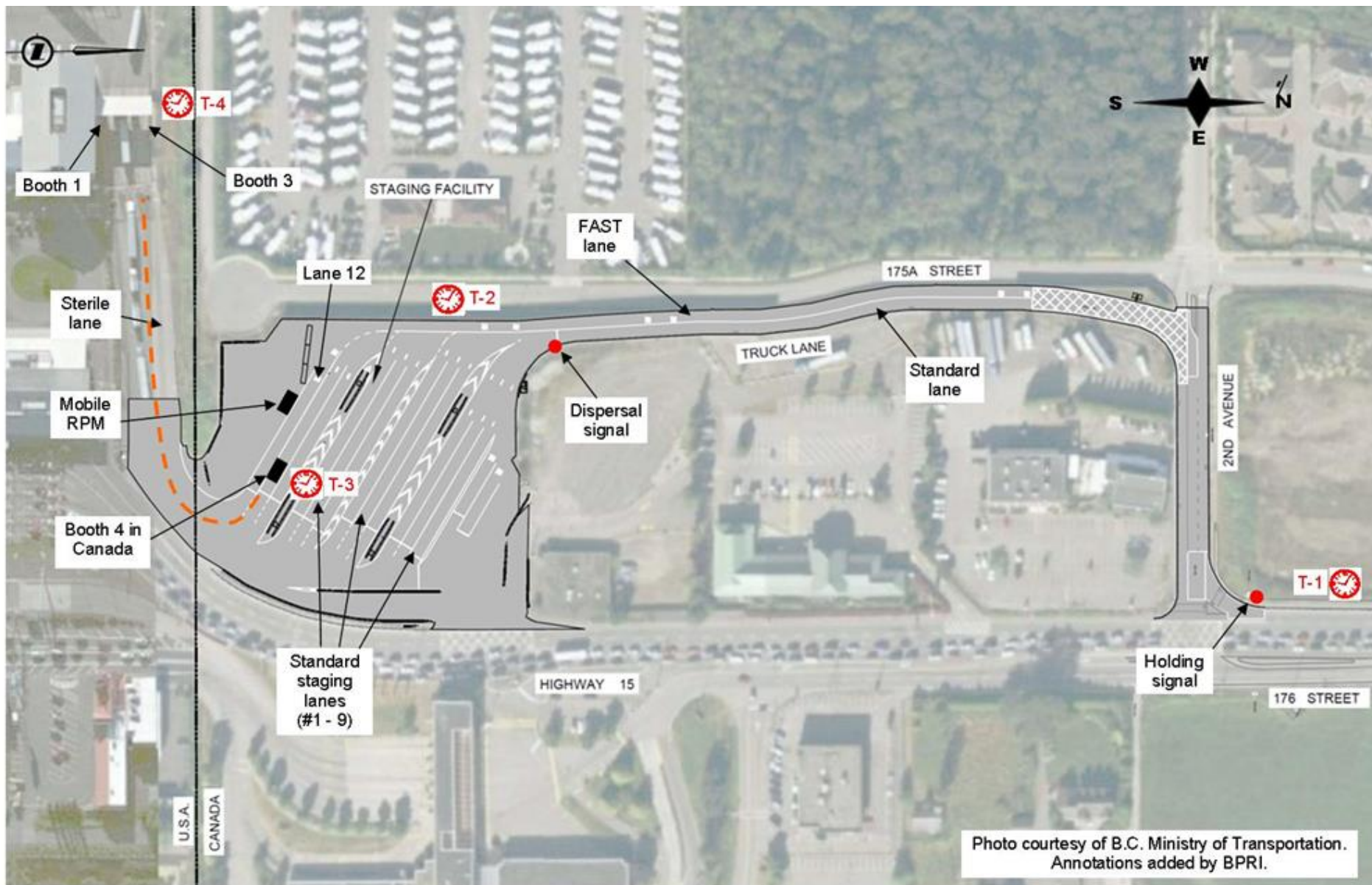
HWY 15 -TRUCK BORDER CROSSING DESIGNATED PRECLEARANCE AREA

DATE : 29 OCT 2012





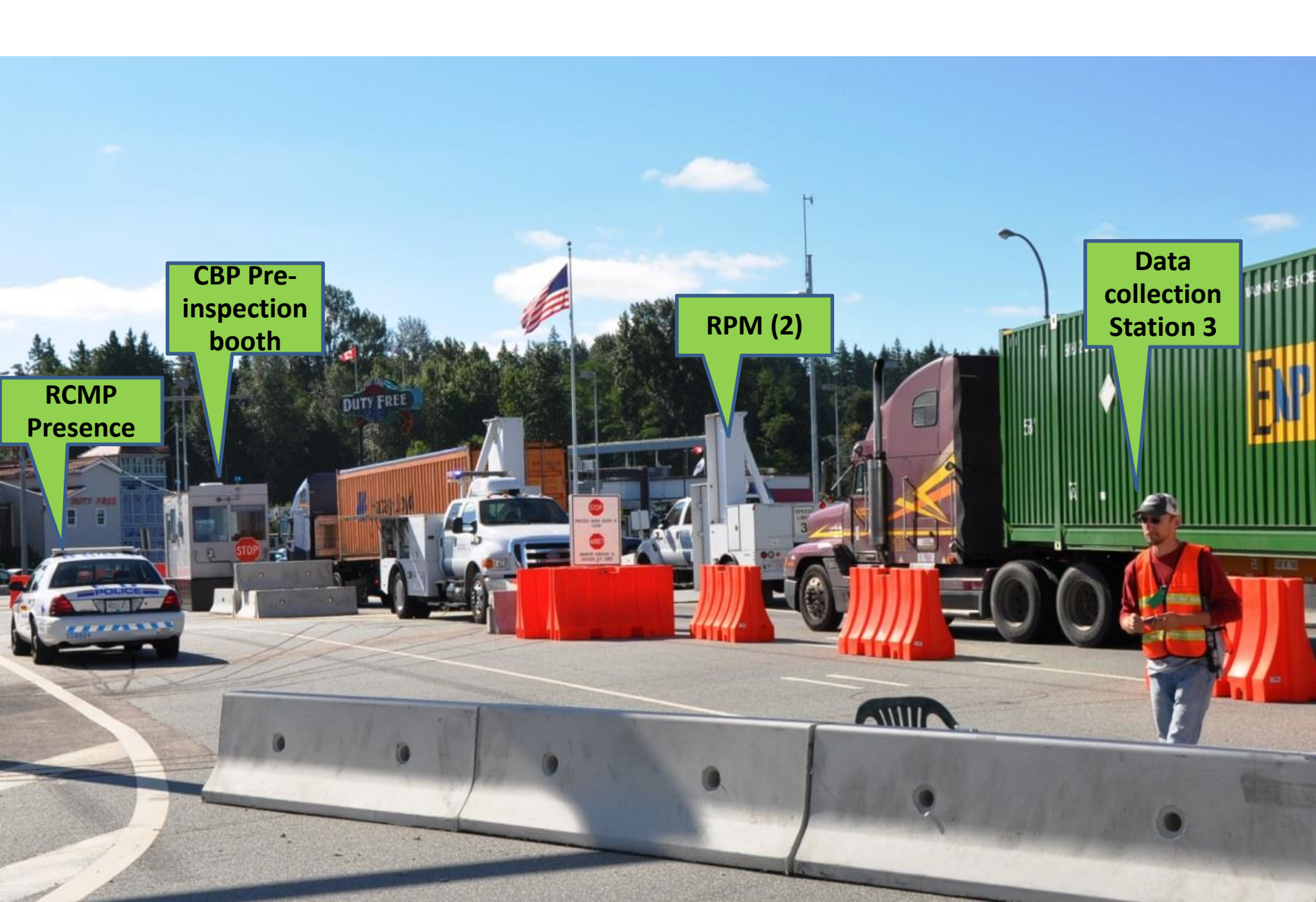
-  White Rock
Tudor Inn, LTD.
-  British Columbia
-  City of Surrey, BC
-  Canada Border
Services Agency



Pilot Configuration – July 2013







RCMP
Presence

CBP Pre-
inspection
booth

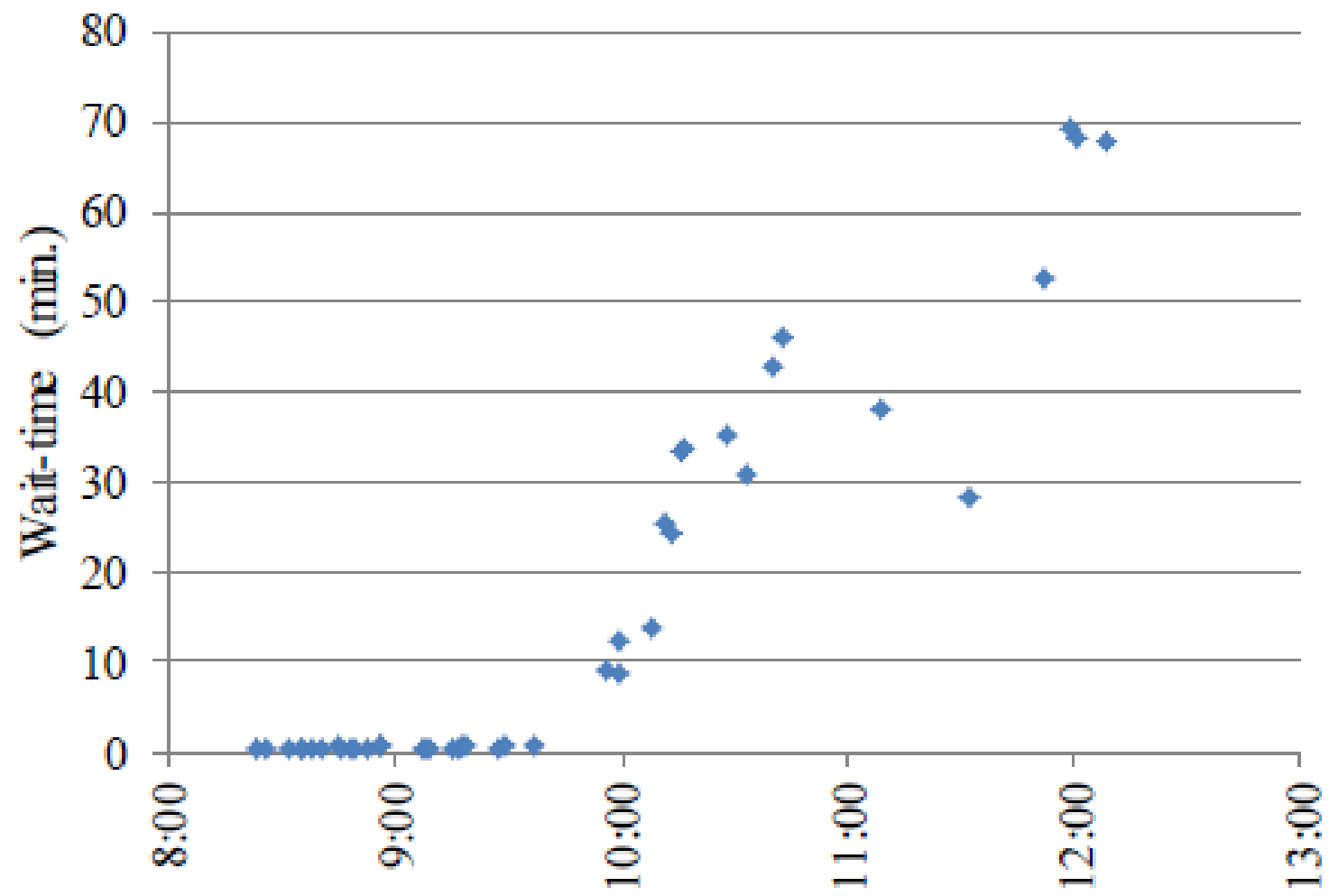
RPM (2)

Data
collection
Station 3

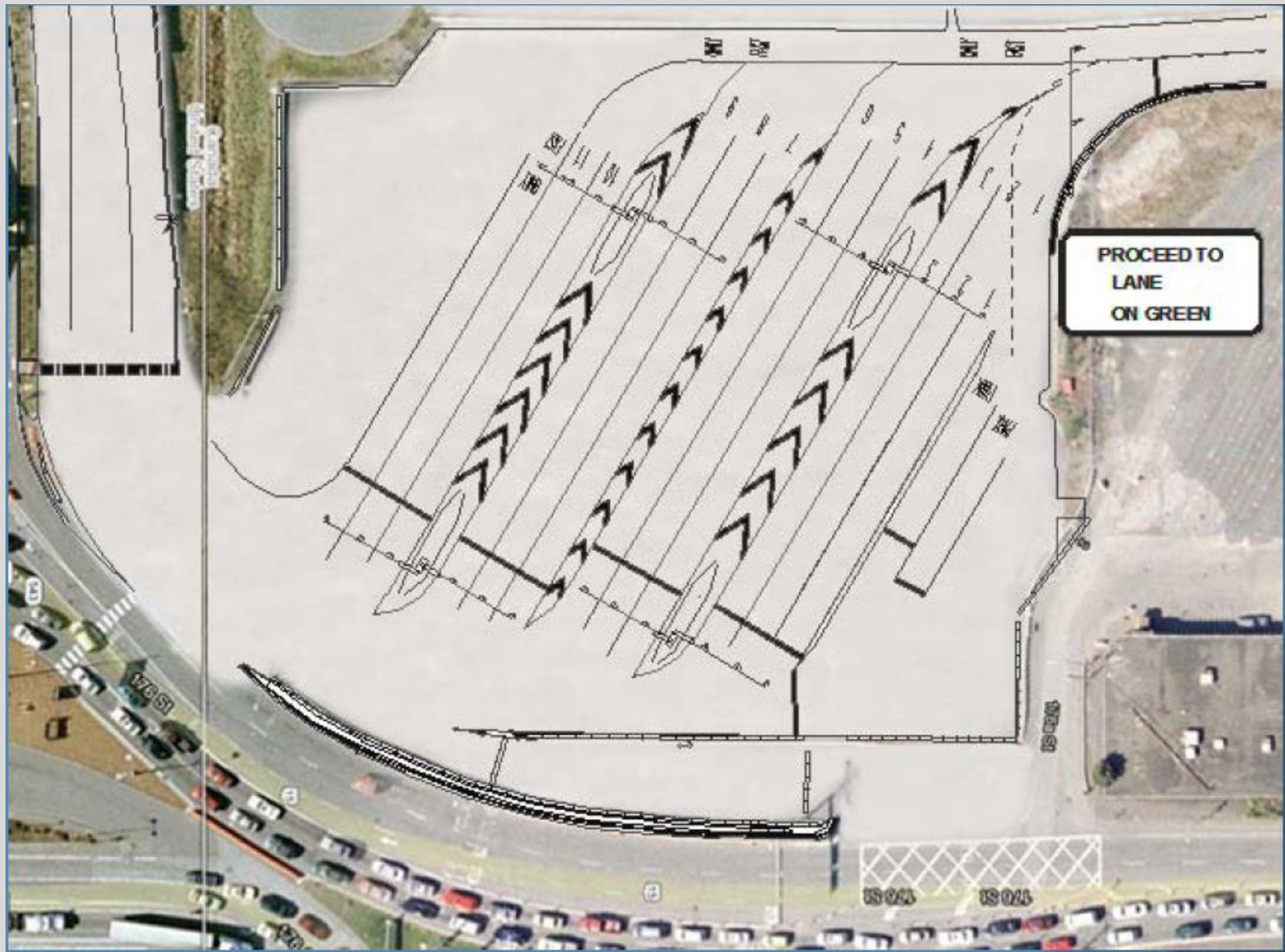
	2012	2013		
	Aug 20-21	Jun 12	Pilot	
			July 2-3	July 23-24
FAST dwell time	62 sec	64 sec	89 sec	50 sec
Frequency & duration of stops at booth 3	Roll through		42%	59%
	Stop & go (insignificant)		29%	32%
	stop / inspection (percent & duration)		29% 68 sec	9% 104 sec

Percentage of FAST/pilot vehicles?

Figure 2. Wait-Times on Highway 15, July 3







PROCEED TO
LANE
ON GREEN

