



Canada Border
Services Agency

Agence des services
frontaliers du Canada

Canada

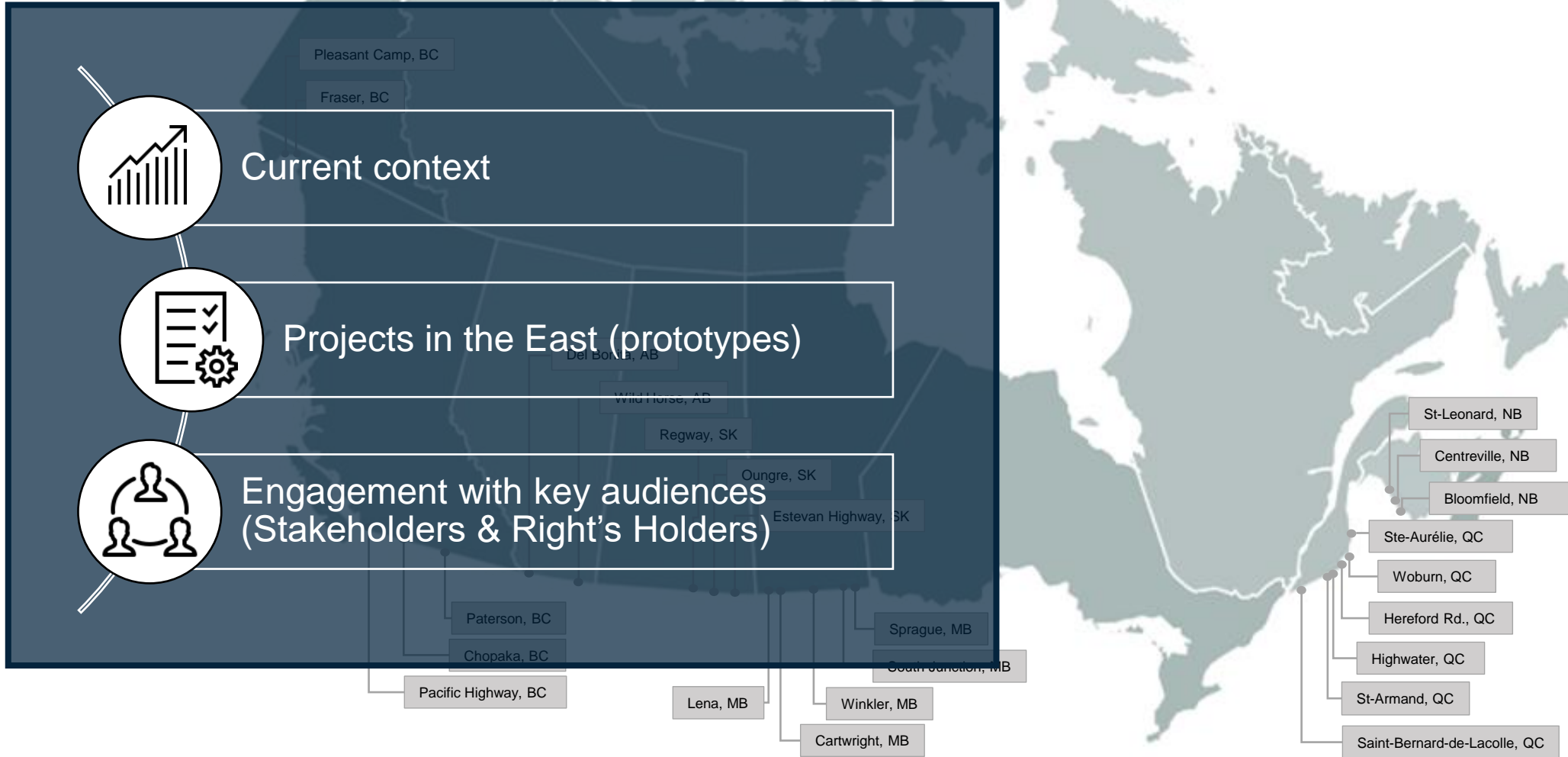
Eastern Border Transportation Coalition

Land Border Crossing Project





Introduction





Mobile Unit Port of Entry

Features:

- ✓ Self-sustaining mobile concept
- ✓ Quick deployment for emergencies and surge capacity, and conducive for multi-modal use
- ✓ Environmental features (solar panels, recycled materials)

Status: Completed in Fall 2022



Pleasant Camp, BC

Fraser, BC

Del Bonita, AB

Wild Horse, AB

Oungre, SK

Estevan Highway, SK

Paterson, BC

Chopaka, BC

Pacific Highway, BC

Lena, MB

Winkler, MB

Cartwright, MB

Sprague, MB

South Junction, MB

St-Leonard, NB

Centreville, NB

Bloomfield, NB

Ste-Aurélie, QC

Woburn, QC

Hereford Rd., QC

Highwater, QC

St-Armand, QC

Saint-Bernard-de-Lacolle, QC



Base Compact Port of Entry

Features:

- ✓ Flexible service model for operational environment
- ✓ Faster delivery due to offsite construction
- ✓ Less impact on operations
- ✓ Moveable/quick deployment

Status/Timeline: Site works and module fabrication began Fall 2023. Expected completion late Fall 2024



Pleasant Camp, BC

Fraser, BC

Del Bonita, AB

Wild Horse, AB

Regway, SK

Oungre, SK

Paterson, BC

Chopaka, BC

Pacific Highway, BC

Lena, MB

Winkler, MB

Cartwright, MB

Sprague, MB

South Junction, MB

St-Leonard, NB

Centreville, NB

Bloomfield, NB

Ste-Aurélie, QC

Woburn, QC

Hereford Rd., QC

Highwater, QC

St-Armand, QC

Saint-Bernard-de-Lacolle, QC



Base Model Port of Entry

Features:

- ✓ Design based on functional business and operational requirements
- ✓ Meet Greening Government Standards, accessibility and health & safety requirements
- ✓ Designed to accommodate future technologies and future growth
- ✓ Most applicable prototype/configuration for CBSA

Status/Timeline: Currently in the design phase



Pleasant Camp, BC

Fraser, BC

Del Bonita, AB

Regway, SK

Oungre, SK

Estevan Highway, SK

Sprague, MB

South Junction, MB

Pacific Highway, BC

Lena, MB

Winkler, MB

Cartwright, MB

St-Leonard, NB

Centreville, NB

Bloomfield, NB

Ste-Aurélie, QC

Woburn, QC

Hereford Rd., QC

Highwater, QC

St-Armand, QC

Saint-Bernard-de-Lacolle, QC



Full Service Port of Entry

Features:

- ✓ Stimulates the economy (bus/tourism, local and Indigenous businesses)
- ✓ Integrates latest security, technological, and service level requirements
- ✓ Environmental greening initiatives
- ✓ Functionality and improved experience

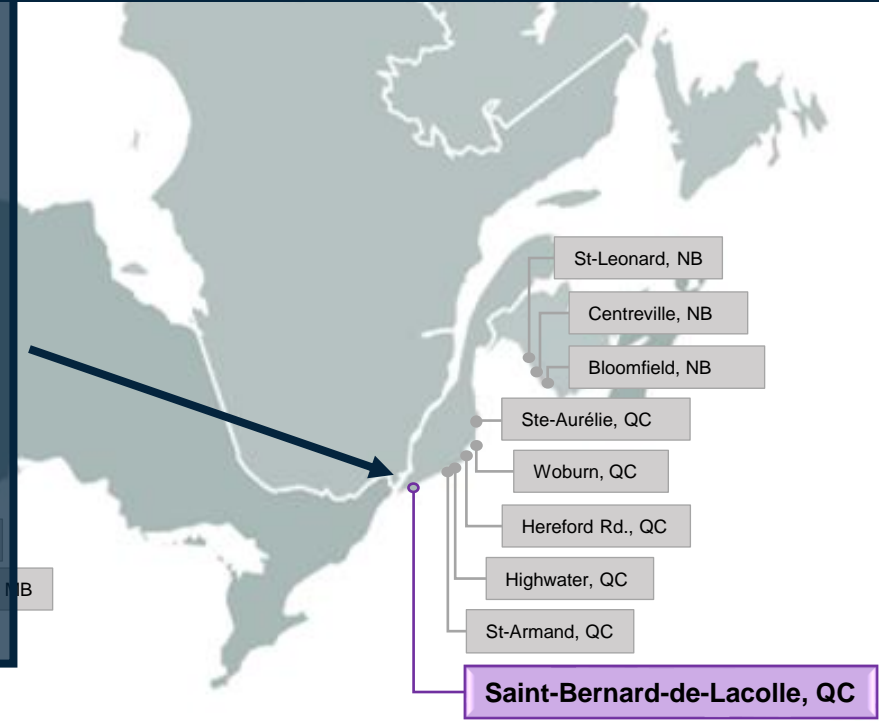
Status/Timeline: Design phase initiated in Fall 2022. Construction phase Summer/Fall 2024 (early site works) to Winter 2028/Spring 2029.



Pleasant Camp, BC
Fraser, BC

Del Bonita, AB
Wild Horse, AB
Regway, SK
Oungre, SK
Estepan Highway, SK

Chopaka, BC
Pacific Highway, BC
Lena, MB
Winkler, MB
Cartwright, MB

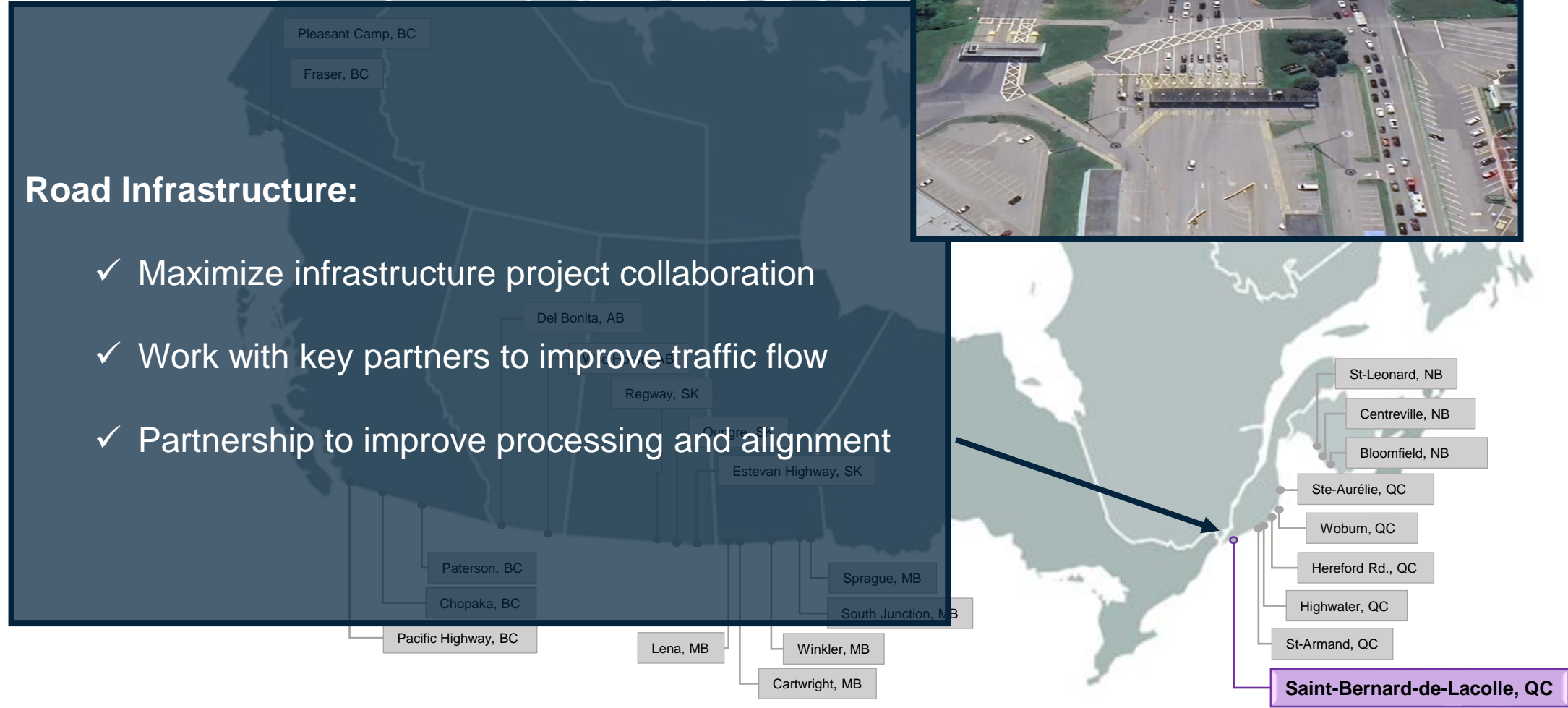




Collaboration and Opportunities

Road Infrastructure:

- ✓ Maximize infrastructure project collaboration
- ✓ Work with key partners to improve traffic flow
- ✓ Partnership to improve processing and alignment





Engagement with Key Audiences

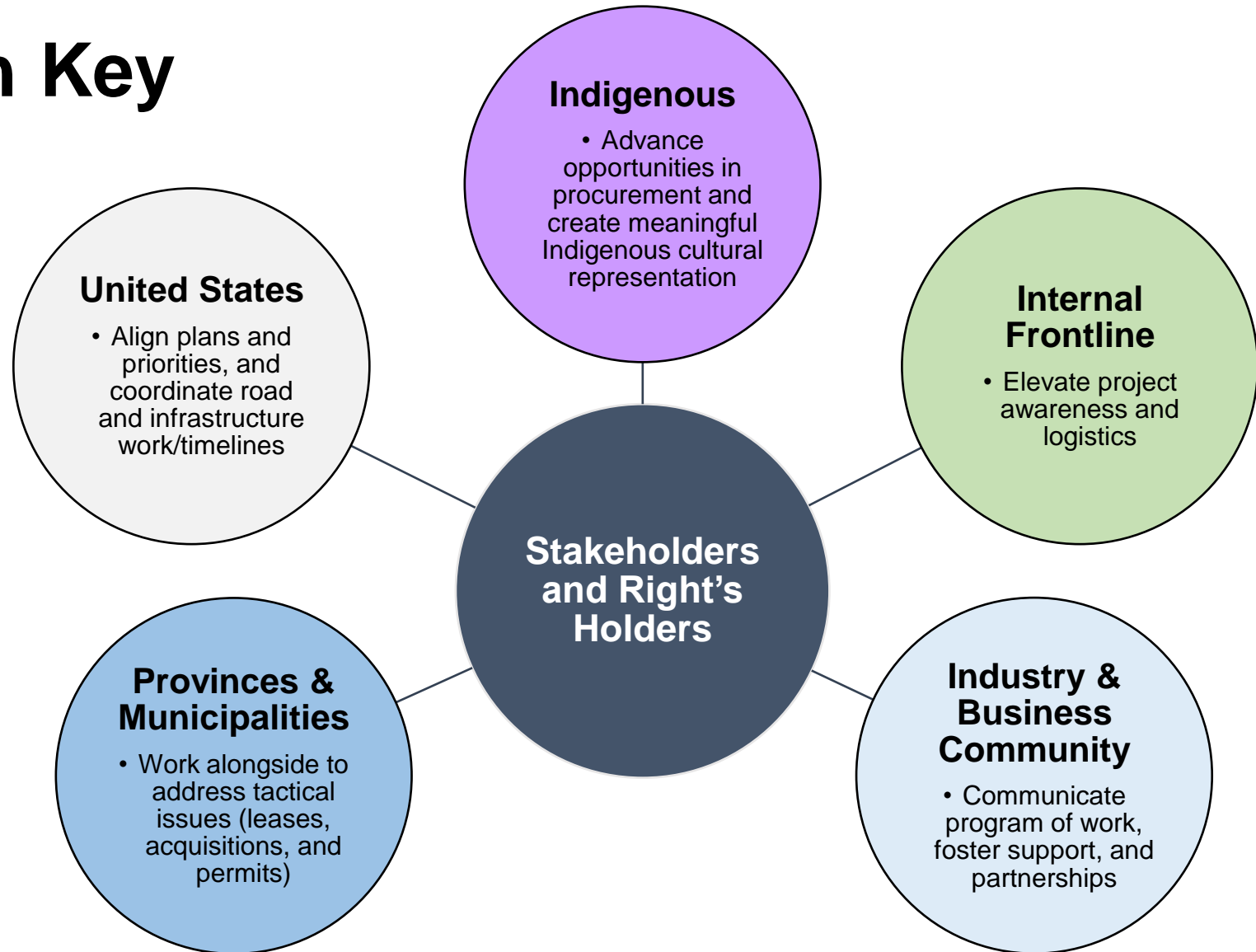
Next Steps:



Engagement on program of work

Update on timelines

Opportunities for collaboration

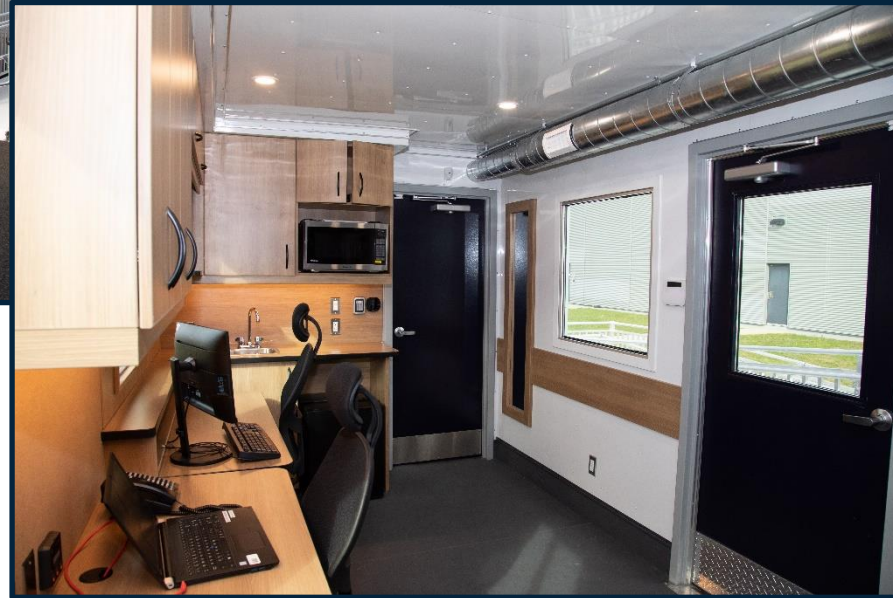
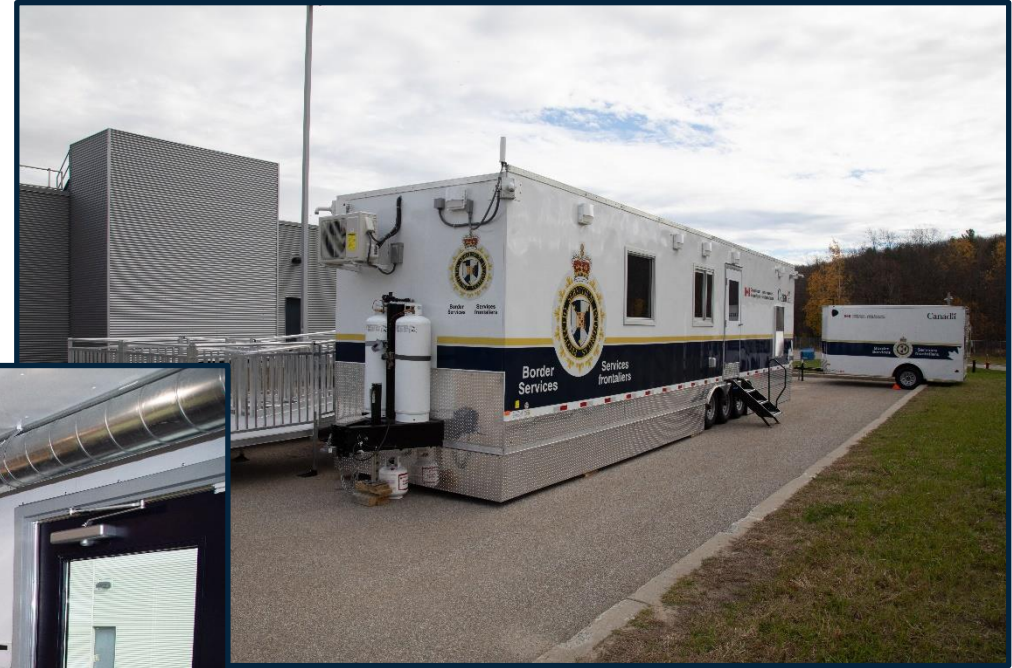
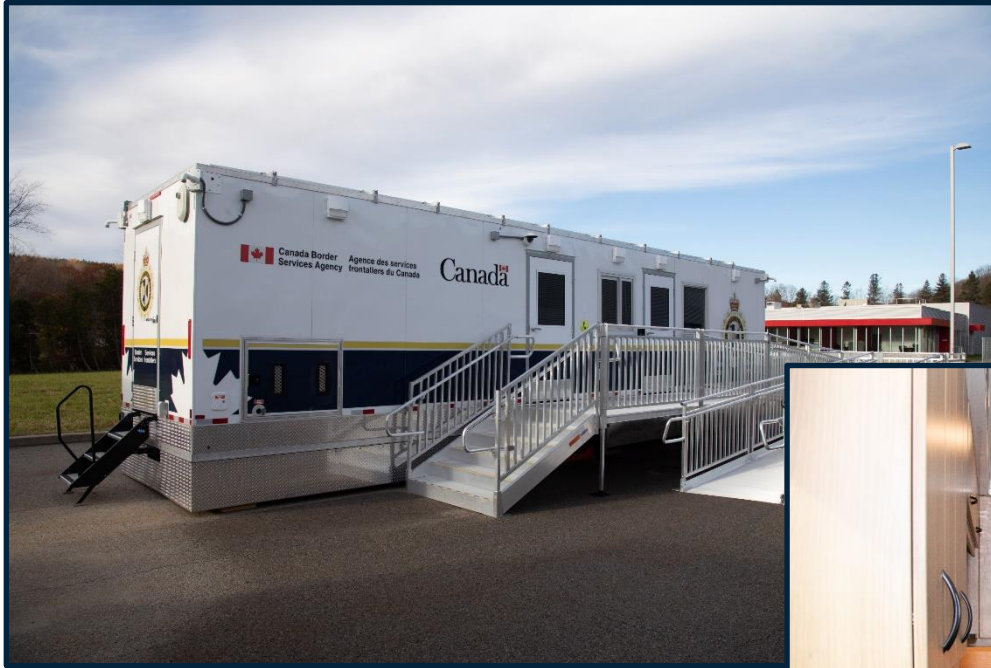




Annex



Bloomfield, NB (Mobile Unit) Additional Images





Ste-Aurélie, QC (Base Compact) Additional Images

