



Canada Border
Services Agency

Agence des services
frontaliers du Canada

Canada

Eastern Border Transportation Coalition

Land Border Crossing Project



PROTECTION SERVICE INTEGRITY | PROTECTION SERVICE INTÉGRITÉ



Objectives



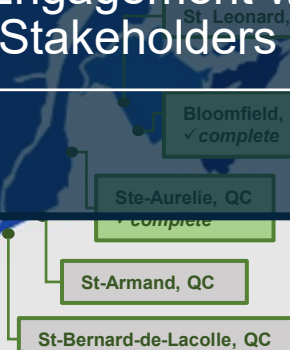
Background



Project Update – East Projects



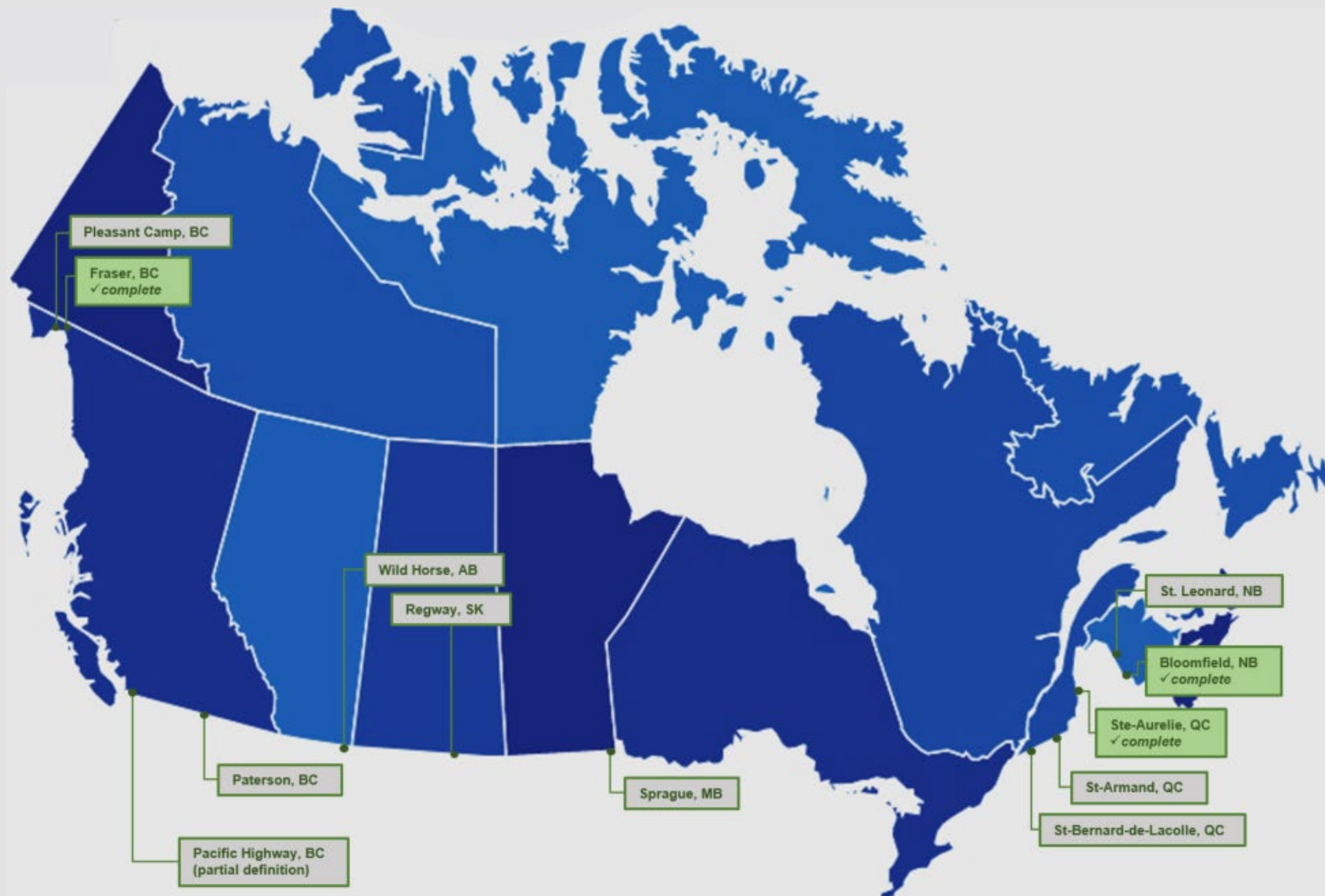
Engagement with key audiences
(Stakeholders & Right's Holders)





Project Overview

- The Land Border Crossing Project (LBCP) is a **multi-phase major infrastructure project** set to replace ports of entry (POE) in poor functional and physical condition across Canada.
- Larger ports will have major infrastructure enhancements while leaving some buildings intact. Smaller ports will be rebuilt completely as they have come to the end of their lifecycle.
- The new designs will respect the Agency's commitment to **reduce greenhouse gas emissions, adapt to changing climate and protect the environment**.
- Technical designs of the new ports of entry were developed with a focus on **flexibility to readily adapt and respond to future needs and changes to operations**.
- Practicability and flexibility are pillars to **modernization and building a border of the future**.





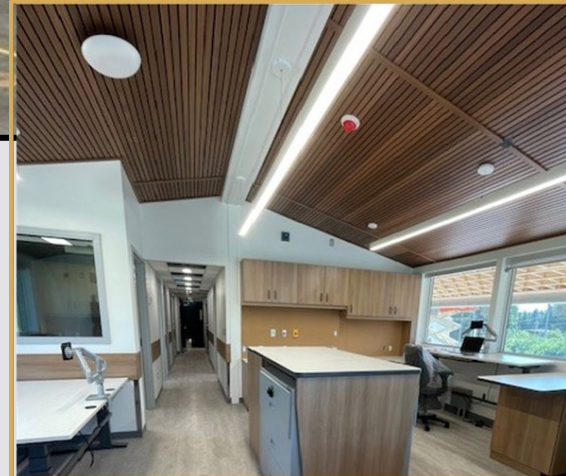
Completed Sites



Sainte-Aurélie (Base Compact Model)



- ✓ Completed in December 2024
- ✓ Flexible service model for the operational environment
- ✓ Faster infrastructure delivery due to the offsite construction
- ✓ Less impact on operation due to the construction model



Bloomfield (Mobile Unit)



Completed in March 2023

- ✓ Self-sustaining mobile concept for ease of deployment
- ✓ Quick deployment for use during emergencies, surge capacity, and temporary facilities with option for multi-modal use in land, air, marine, and rail
- ✓ Environmental features (solar panels, rain water reserve)



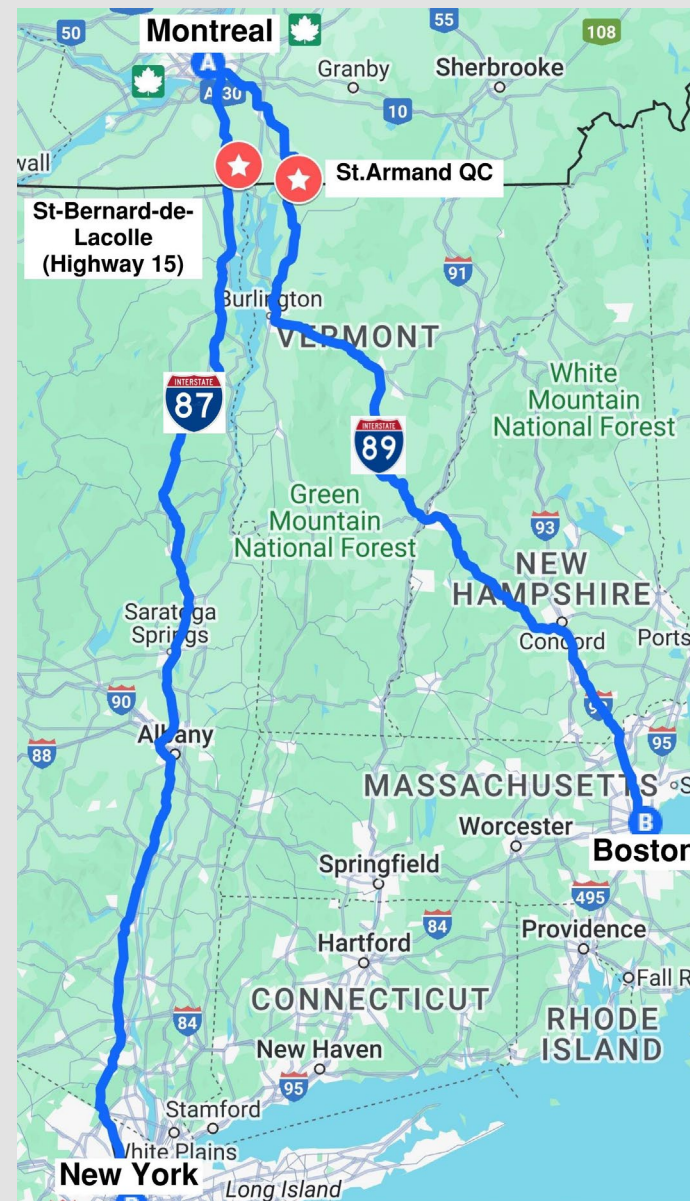
St-Bernard-de-Lacolle and St-Armand

St-Bernard de-Lacolle

- Busiest POE East of Ontario
- Connects Montreal with New York City
- Current site has significant traffic flow issues and requires proper space for Operational activities
- Construction contract awarded, replacement of travellers facility began in Winter 2025 (announced in February 2025)

St-Armand

- Connects Montreal with New England and Boston
- Current site has traffic flow issues requires improved commercial examination facilities
- Study began in the Fall 2024





St-Bernard-de-Lacolle Project

- ◆ **Value of construction:** Approximately 100 million dollars
- ◆ **Project Scope:**
 - ◆ The project focuses on bringing together and connecting the traveller and commercial operations buildings, and improve traffic flow through the port of entry
 - ◆ The project includes the demolition of outdated buildings and infrastructure and the construction of new traveller processing facilities
- ◆ **Contracts:** Provencher Roy and Pomerleau Inc.
- ◆ **Construction:** 2025 to 2028/2029
- ◆ **Delivery:** In phases to keep operations open during construction
- ◆ **Timeline:** Anticipated completion in Spring 2028



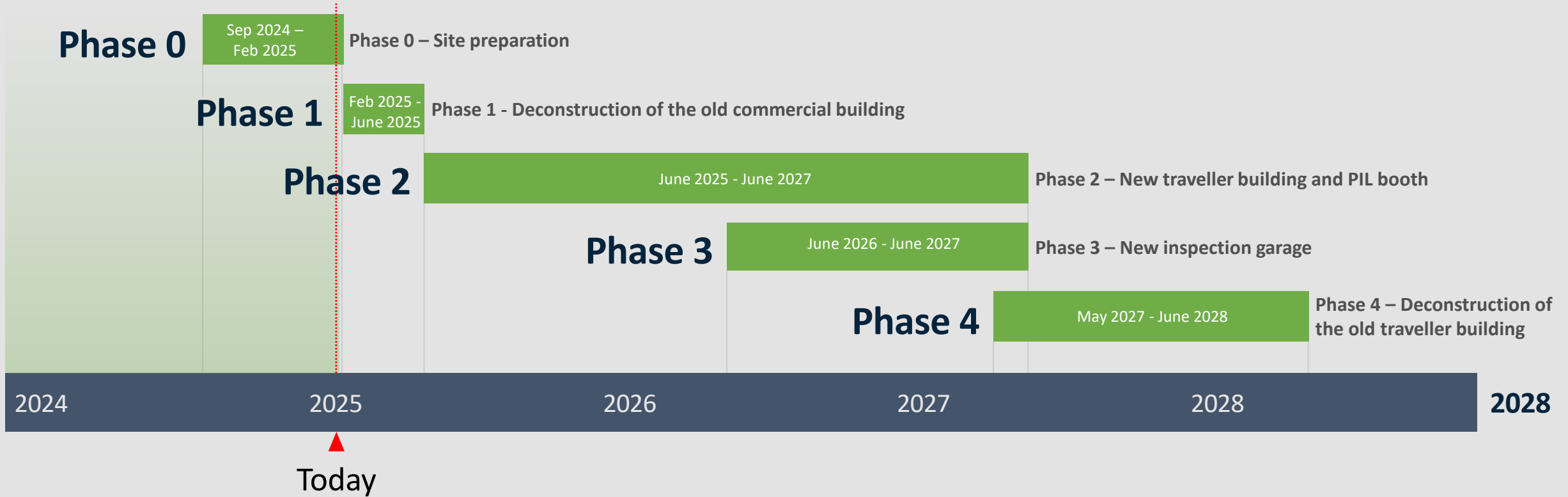


Operational Readiness:

- ✓ Ensure bus operation and customs clearance and redirect oversized when required
- ✓ Manage traffic during construction of primary inspection lanes, ensure preparation of nearby ports of entry (planned for phase two not during peak travel period)
- ✓ Advantage: existing traveller building remains open during construction (all services offered)



Phasing





Non-definitive sketch 2025



Non-definitive sketch 2025



St-Armand & Highgate Springs LPOE Road Alignment



- Renovation for the St-Amand LPOE
- Complete studies in 2024-2025
- Exploring opportunities to coordinate with GSA/CBP
- Road alignment to improve traffic flows



Engagement with Key Audiences

INTERNAL

Objective: Engage with regional managers, front-line staff and internal partners to **elevate project awareness and logistics.**

- ✓ Regular engagement with regional managers, front-line staff and internal partners to ensure information and coordination

INDIGENOUS

Objective: Engage impacted communities to **advance opportunities in procurement and create meaningful Indigenous cultural representation.**

- ✓ Official letters sent to communities
- ✓ Nation-to-Nation engagement

OGD, INDUSTRY & LAND OWNERS

Objective: Engage OGD partners to **communicate program of work, foster support, and partnerships.**

- ✓ Work closely with Other Government Departments
- ✓ Hold updates/communicate regularly with adjacent land owners
- ✓ Foster a partnership with Industry, leverage existing platforms

PROVINCES & MUNICIPALITIES

Objective: Engage provincial and municipal authorities to **work alongside to address tactical issues.**

- ✓ Work closely with Provincial and State transportation departments
- ✓ Seek support from provincial Intergovernmental Relations
- ✓ Work closely with municipalities on tactical issues and informing local residents

UNITED STATES

Objective: Engage national and local US counterparts (US CBP, GSA, State transportation authorities) to **align plans, priorities, and road and infrastructure work/timelines.**

- ✓ Active collaboration on crosswalk of infrastructure projects
- ✓ Manage projects and communications on both sides of the border



Thank you