



BEYOND THE ROAD

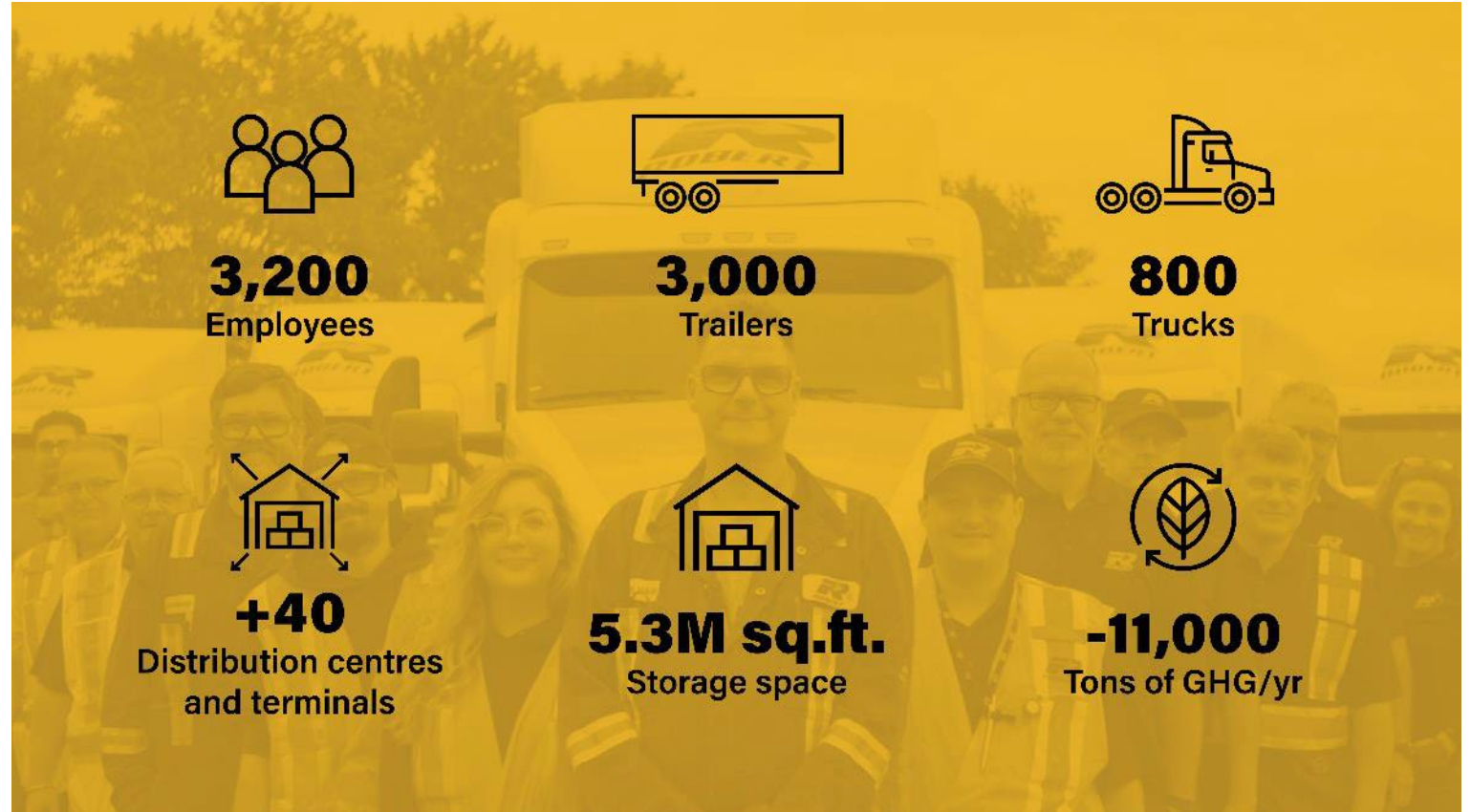
The power of partnership. Working together to achieve your logistics objectives.



GROUPE ROBERT

Since 1946, Groupe Robert has been your neighborhood supply chain partner, proudly based in Boucherville, Quebec, just a 15-minute drive from downtown Montreal.

With offices in Quebec, Ontario and Alberta, we're here to meet your logistics needs across North America.



OUR CLIENTS

AEROSPACE AND AUTOMOTIVE



BOMBARDIER

PACCAR

VOLVO

BRIDGESTONE



Schneider
Electric



FOOD AND BEVERAGES



KraftHeinz



INDUSTRIAL AND MINING

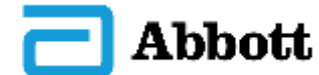


RioTinto

GLENCORE

TAFISA

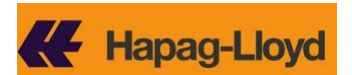
PHARMACEUTICAL AND CONSUMER PRODUCTS



L'ORÉAL



OTHER PARTNERS



OUR NETWORK

QUÉBEC:

- 30+ Warehouses (+5M SQFT)
- 4 Truck terminals
- 1 Rail Served Facility

ONTARIO:

- 1 Warehouse (350K SQFT / PP)
- 1 Truck terminal

ALBERTA:

- 1 Warehouse (150K SQFT / PP)

QUÉBEC :

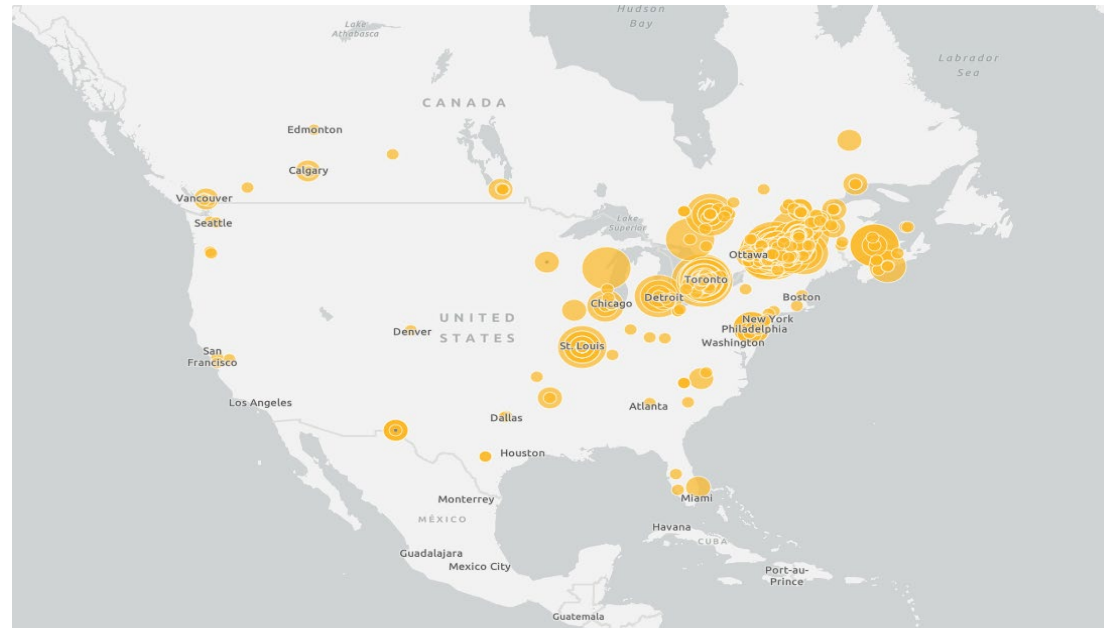
- 25 Distribution centers
- 16 Transport terminals
- 1 Rail-served facility

ONTARIO :

- 1 Distribution Center
- 1 Transportation Terminal

ALBERTA :

- 1 Distribution Center





OUR CERTIFICATIONS

Transport, safety and sustainability



Customs



Canada Border
Services Agency

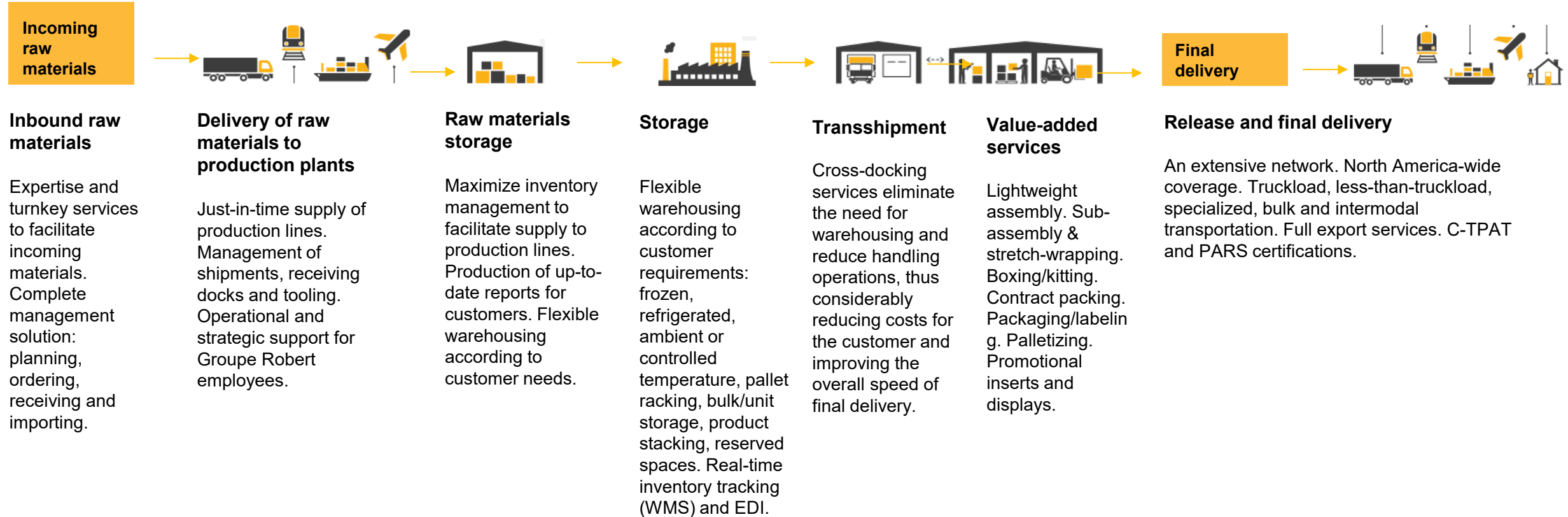
Bonded in LaSalle, QC

PARS (Pre-Arrival
Review System)

Distribution centers



GROUPE ROBERT: YOUR SUPPLY CHAIN SOLUTIONS PROVIDER FROM START TO FINISH





OUR INTERMODAL SERVICES

Efficient goods movement:

Combine trains, trucks and ships for optimal transport.

Example 1: Train for long distances, truck for final delivery.

Example 2: Ship across ocean, train to inland distribution center.

Benefits: Reduced costs and carbon emissions by leveraging the advantages of each mode.

Key features: Proximity to the Port of Montreal. Integrated logistics systems.

Expertise in maritime and customs regulations. Dedicated port staff.

PARS (Pre-Arrival Review System) certification. Direct access to rail lines.

Strong relationships with major Class 1 railways.

Rail services to most North American destinations.

Specialized equipment and services:

Refrigerated containers.

Toplift container handlers. Container and cargo storage.

Direct delivery from the Port of Montreal and/or CN/CP railroads.

Customs clearance and logistics with shipping lines/forwarders.

Bulk container transport and unloading services.

Loading terminals:

Filling and emptying of containers.

Palletizing.

Bulk transshipment.



TRANSPORT USA

We have the expertise, equipment and certifications to provide a turnkey service to our customers seeking to import or export goods to or from the United States.



A DEDICATED TEAM IN THE UNITED STATES

- Export - Import - Intra-USA
- As a Canadian and U.S. bonded carrier, we are authorized to transport goods between two bonded warehouses.
- We are also certified under the C-TPAT program (Customs-Trade Partnership Against Terrorism):
 - Faster border clearance - dedicated lanes for certified carriers
 - Fewer inspections
 - Border contact who knows our company



TECHNOLOGY

Our technology suite, including GEOTAB, EDI and API integration, illustrates our commitment to leveraging advanced tools to improve logistics efficiency and transparency.

GEOTAB provides robust fleet management solutions, offering real-time GPS tracking, vehicle diagnostics and driver performance analysis, ensuring optimal fleet operations and safety.

EDI (Electronic Data Interchange) streamlines communication by enabling the automated exchange of business documents between systems, reducing errors and speeding up transaction processing.

Our API (Application Programming Interface) capabilities facilitate seamless integration with our customers' systems, enabling customized solutions and real-time data access.

Together, these technologies enable us to deliver superior service, operational efficiency and unrivalled visibility across the supply chain.

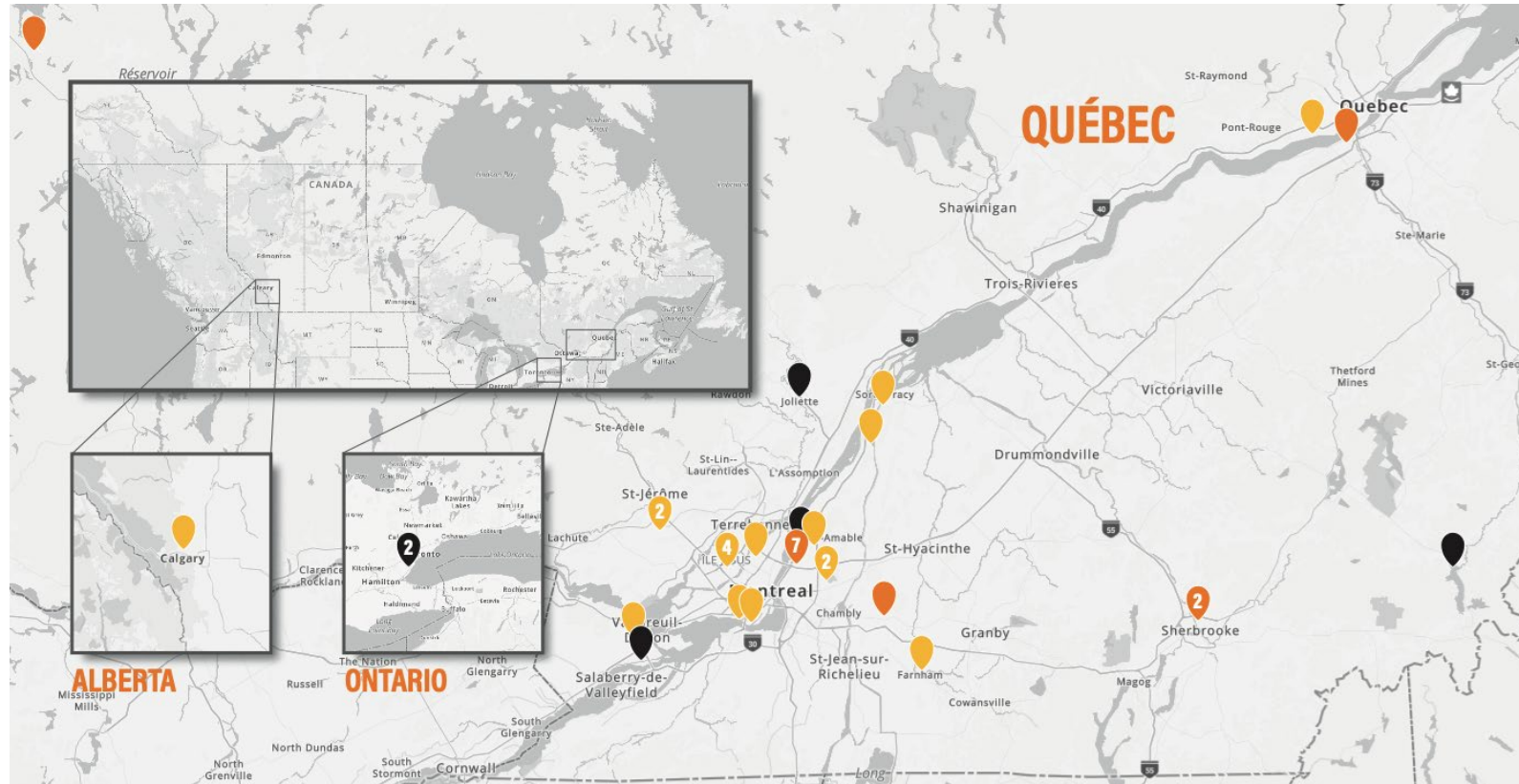


DISTRIBUTION CENTERS



OUR DISTRIBUTION NETWORK

- More than 40 terminals and distribution centers in Quebec, Ontario and Alberta.
- 3 rail-served sites for transshipment solutions for bulk and industrial products.
- Less than 15 minutes from CN & CP intermodal terminals.
- Immediate proximity to the Port of Montreal and the Port of Contrecoeur.



BOUCHERVILLE, QC – GROUPE ROBERT HQ TERMINAL



- 4.5M SQFT Total Space
- 1200 TEU Storage Capacity
- Access to 3 arteries to Montreal
- 10 mins from Port of Montreal
- CN Rail Access
- 150K SQFT Cold Storage WH
- 80K SQFT Industrial WH
- 1 Container Top Lift
- 1 Overhead Crane

PROJECTS AND MAJOR PARTNERS

- Experience and expertise in moving and handling logistics-type cargo for large, heavy projects.
- Experience and expertise in the transport and storage of dangerous goods, ideally with a particular focus on battery cells and/or battery metals.
- Update on our vision of upcoming changes in Montreal's logistics landscape - i.e. new facilities, new geographical areas of interest, etc. - with a particular focus on battery cells and/or battery metals



posco
FUTURE M



VOLVO
NOVABUS



PORT  MONTRÉAL



SHARED COMMITMENT TO THE ENVIRONMENT

At Groupe Robert, sustainable development and reducing the ecological footprint of the supply chain are top priorities. We believe that as an industry leader, we have a duty to take meaningful action in these areas.

We are committed to positively marking our presence as a corporate citizen, where our operations continue to grow while minimizing their impact on the environment for future generations, and we will continue to invest in the technologies and people to achieve this ambition.

