



PONT INTERNATIONAL
Gordie Howe
INTERNATIONAL BRIDGE

Eastern Border Transportation Coalition

May 7, 2025

Construction Update



Bridge and Canadian Port of Entry

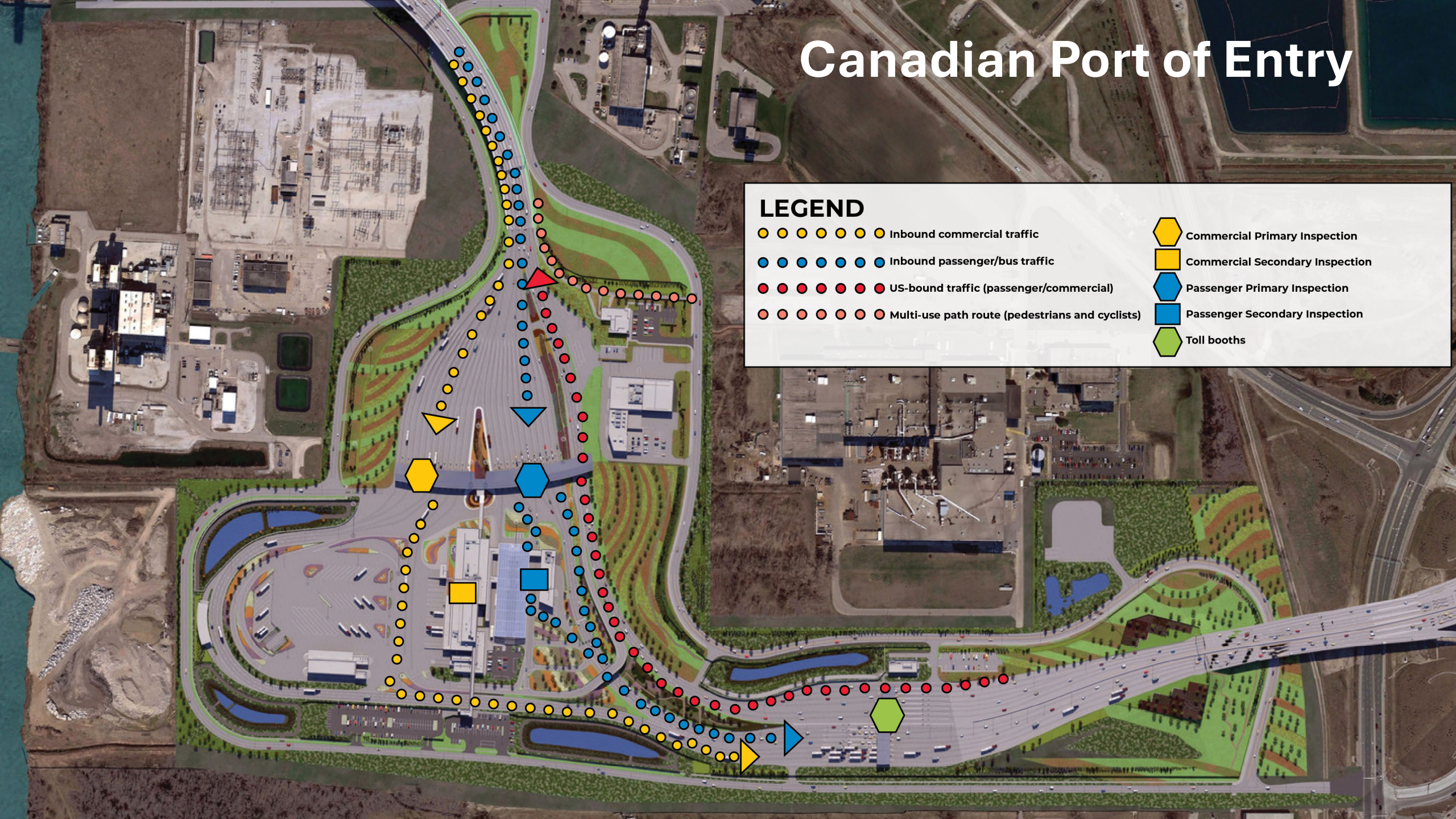


Canadian Port of Entry

LEGEND

- ● ● ● ● ● ● ● Inbound commercial traffic
- ● ● ● ● ● ● ● Inbound passenger/bus traffic
- ● ● ● ● ● ● ● US-bound traffic (passenger/commercial)
- ● ● ● ● ● ● ● Multi-use path route (pedestrians and cyclists)

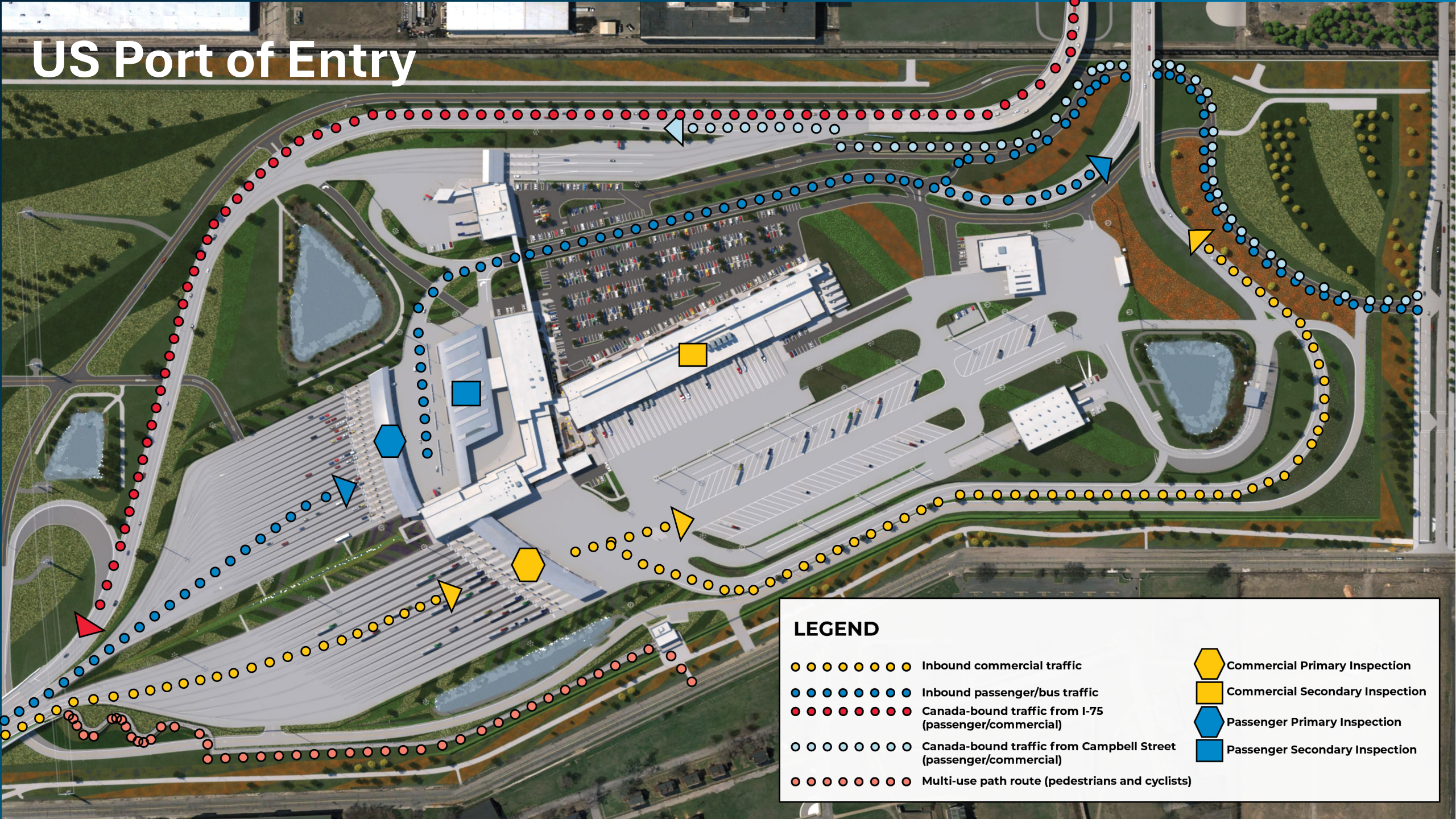
- Commercial Primary Inspection
- Commercial Secondary Inspection
- Passenger Primary Inspection
- Passenger Secondary Inspection
- Toll booths



US Port of Entry



US Port of Entry



LEGEND

- ● ● ● ● ● ● ● Inbound commercial traffic
- ● ● ● ● ● ● ● Inbound passenger/bus traffic
- ● ● ● ● ● ● ● Canada-bound traffic from I-75 (passenger/commercial)
- ○ ○ ○ ○ ○ ○ ○ Canada-bound traffic from Campbell Street (passenger/commercial)
- ● ● ● ● ● ● ● Multi-use path route (pedestrians and cyclists)

- Commercial Primary Inspection
- Commercial Secondary Inspection
- Passenger Primary Inspection
- Passenger Secondary Inspection

Michigan Interchange

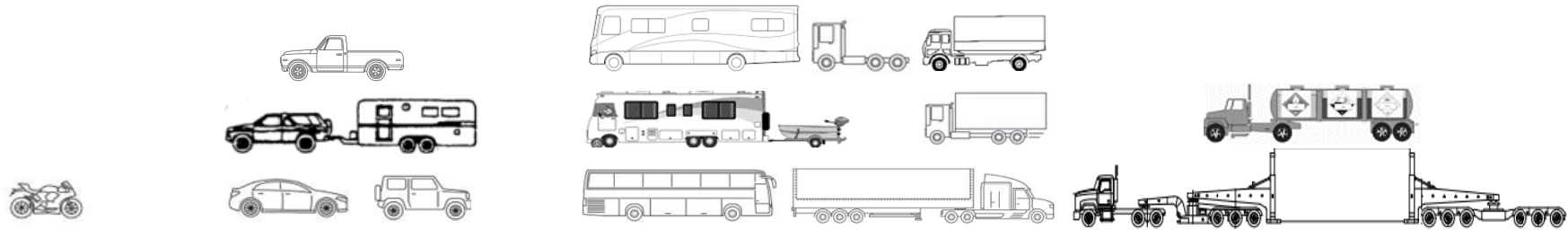


Tolling and Accounts

- ✓ Rate based on axle of vehicle class and height
- ✓ Tolls can be paid in Canadian or US dollars
- ✓ Combination of manual, automatic and electronic toll collection
- ✓ Prepaid and post-paid accounts
- ✓ Customer service call centre
- ✓ Bilingual English/French services



Toll Classifications



< 2.3m (7.5 ft)		Small and Medium Vehicles (Max vehicle height under 2.3m)		≥ 2.3m (7.5 ft)	Large Passenger Vehicles and Commercial Vehicles (Max vehicle height over 2.3m)
Pedestrians and Cyclists	Class 1	Class 2		Class 3	Class 4
	Motorcycles and 3-wheel trikes	Medium 2-3 axle vehicles: Cars, SUVs, vans, pick-up trucks, small motorhomes		Large vehicles with 2 or more axles: All single body trucks or semi-trailers (with one or more trailer).	non-standard vehicle: Extra high, extra wide, and/or non-standard Hazardous
no fee	flat base rate Per vehicle	flat base rate per vehicle	plus flat base rate per trailer	rate per axle. number of axles include the axles on the prime mover plus all trailers.	Rate per axle plus escort toll fee as applicable, plus an additional flat toll fee depending on requirements (pre-arranged)

Getting Ready to Open

- Fall 2025
- Advance system and processing testing
- Testing with vehicles
- Site visit opportunities
- Celebrations





PONT INTERNATIONAL
Gordie Howe
INTERNATIONAL BRIDGE

Stay connected

 gordiehoweinternationalbridge.com

 info@wdbridge.com


 1-844-322-1773

 Gordie Howe Bridge

 @gordiehowebrg

 @gordiehowebridge

 @gordiehowebrg

 WDBA-APWD

Visit Our Website

